

IW Sales Release

Confidential

PT/SMP | December 2007



BOSCH
Invented for life

C-EXACT Variants



→ **Robust and durable**

Durability test over well more than 1 Mio. cycles

→ **All executions feature a brushless motor**

Patented EC motor from German production site

→ **Excellent repeatability**

Cmk-values >1,67 in tolerance window of +/-10% (according to ISO 5393)

→ **Best price performance ratio in the market**

Product details:

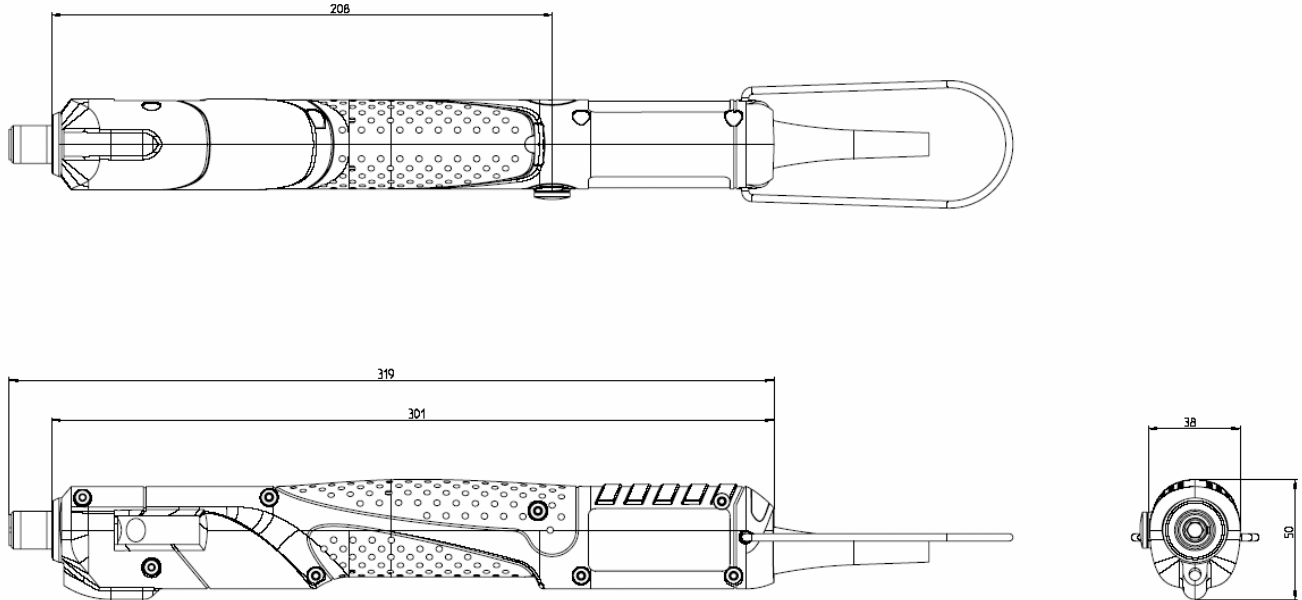
- **NEW:** Extended torque range of 0,2 through 3,5 Nm (up to M 4)
- **NEW:** Different speeds of 500 and 1000 rpm
- **NEW:** Push- and lever start
- **Robust and durable:** Durability test 1 Mio. cycles
- **All executions feature a brushless motor**
(Patented EC motor from European production of Bosch)
- **Excellent repeatability:** Cmk-values >1,67 in tolerance window of +/-10%
(according to ISO 5393)
- ¼“ quick change chuck
- **All tools ESD capable** (electrostatic discharge)
- **Low voltage: 36 Volt DC**
- **Ergonomic:** Handle diameter 40 mm, Weight 650 gram
- **One handed operation** for lever start and Forward / Reverse switch
(Cannot harm the tool even with running motor)
- **Signals**
OK / NOK with a two-colored LED on the screwdriver and beep for NOK
- **Overload protection** for motor and PCB
- **Low service and spare parts costs** by proven and identical parts (from EXACT range and air tools) and by the same repair procedures
- **Best price performance ratio** in the market

Technical data:

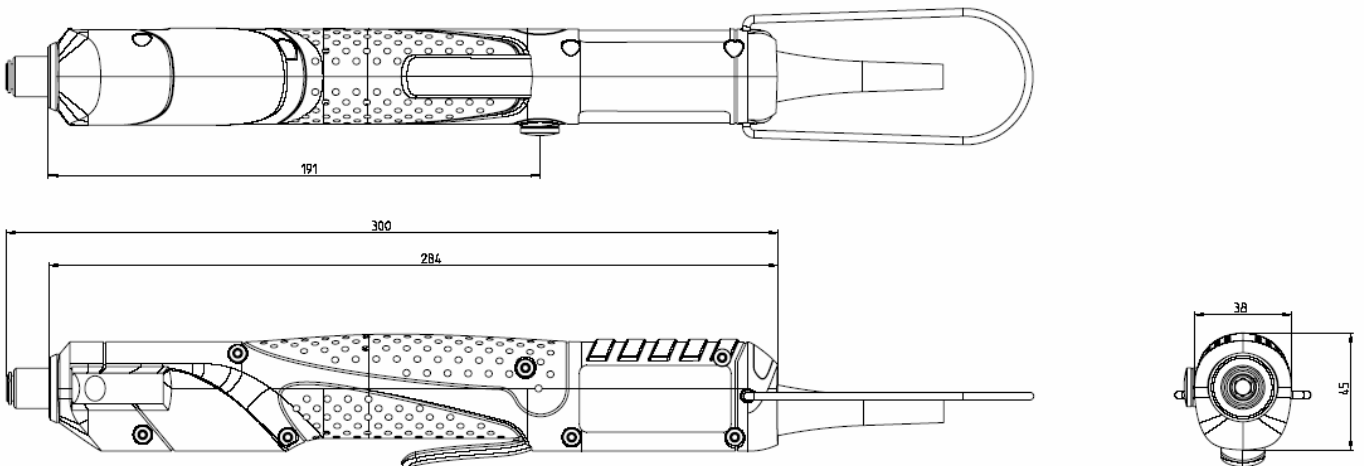
	C-EXACT 2 Lever start	C-EXACT 1 Lever start	C-EXACT 2 Push start	C-EXACT 1 Push start
Order number 0 602 495	... 203	... 202	... 208	... 207
Voltage	36 V	36 V	36 V	36 V
Current draw	1,0 A	1,0 A	1,0 A	1,0 A
No load speed	500 rpm	1000 rpm	500 rpm	1000 rpm
Torque range	0,5-2 Nm	0,2-0,8 Nm	0,5-2 Nm	0,2-0,8 Nm
Direction of rotation	R/L	R/L	R/L	R/L
Output drive	1/4“ QCC	1/4“ QCC	1/4“ QCC	1/4“ QCC
Maximum screw diameter	3 mm	2 mm	3 mm	2 mm
Weight	0,65 kg	0,65 kg	0,65 kg	0,65 kg
Delivery	AVAILABLE FROM STOCK	AVAILABLE FROM STOCK	AVAILABLE FROM STOCK	AVAILABLE FROM STOCK

Dimensional drawings:

0 602 495 205, 0 602 495 207, 0 602 495 208

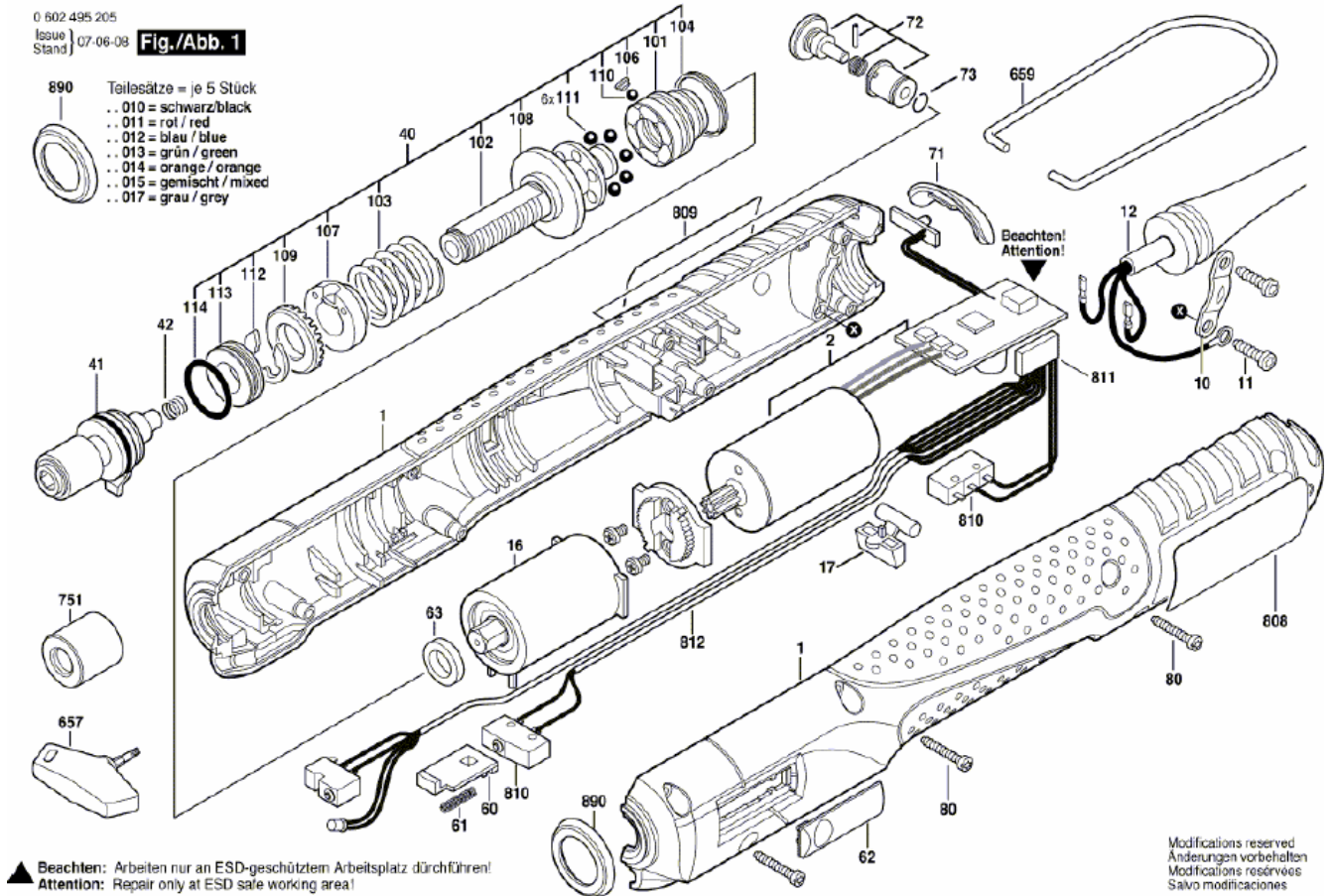


0 602 495 200, 0 602 495 202, 0 602 495 203

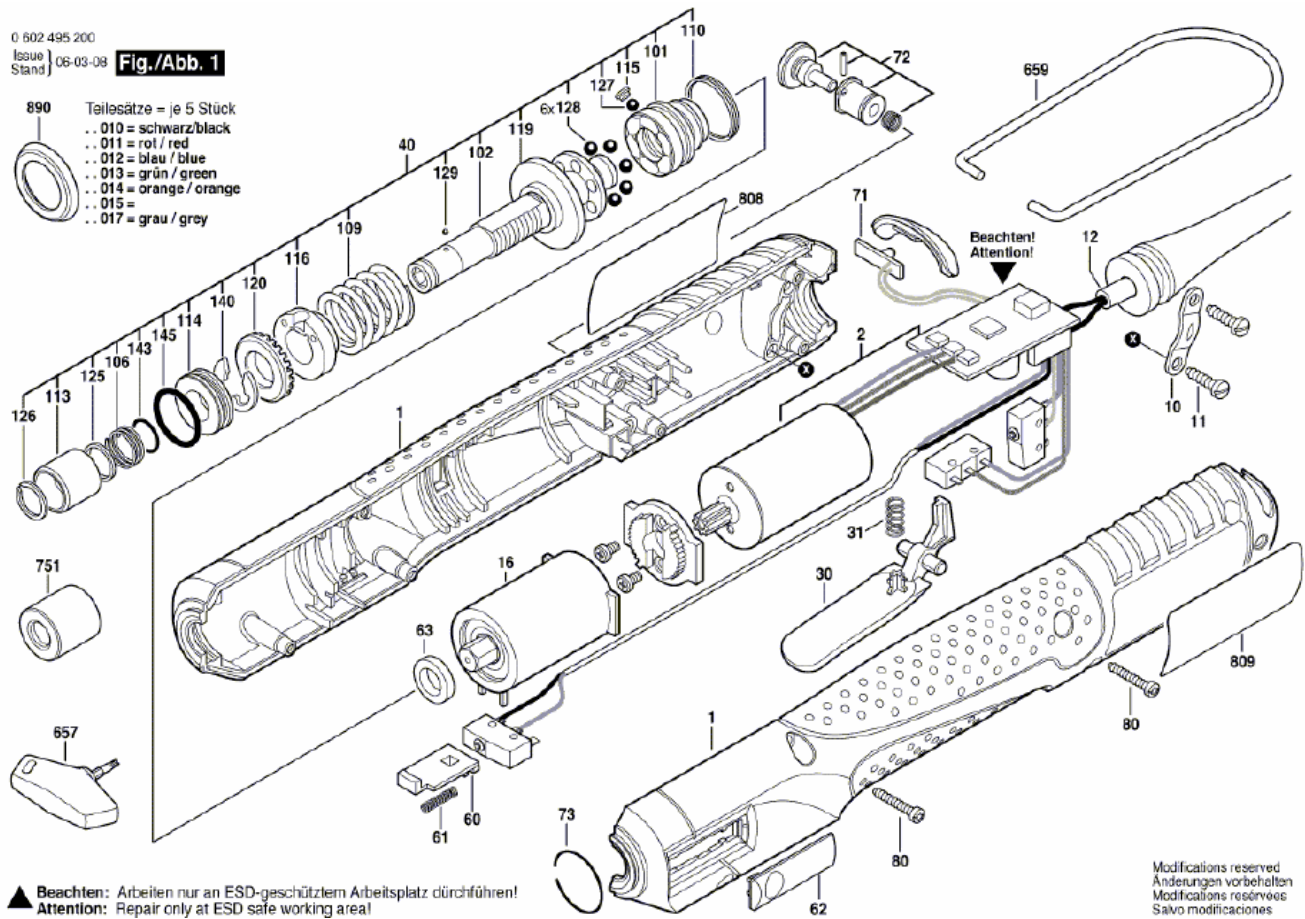


Line drawings:

0 602 495 205, 0 602 495 207, 0 602 495 208



0 602 495 200, 0 602 495 202, 0 602 495 203



Part lists:

please see www.boschproductiontools.com